

# Lil' Hawks PRIDE



As a joint effort between USD 292 and the Grainfield Community Development Committee (GCDC) to meet the needs of parents seeking daycare for their children, the Lil' Hawks PRIDE Extended Pre-School & After-School Programs were created. By implementing the Extended Pre-School Program for 3-4 year olds, new openings for babies and toddlers became available at our local daycares. This allows working parents to continue sending their children to USD 292 while ensuring they are being cared for and educated by professionals.

Welcome to the Lil' Hawks PRIDE  
Extended Pre-School & After-School Programs!

# Extended Pre-School Program

The Lil' Hawks PRIDE Extended Pre-School Program is available to students enrolled in the WES pre-school, who are 3 or 4 years old prior to August 31, and live in the USD 292 school district. Out-of-district students will be accepted as space is available. We will offer a cognitive, social-emotional and physical-based program which will coincide with our current pre-school teacher's curriculum.

## Hours

The Extended Pre-School Program will begin at 11:15am and end at 3:30pm Monday thru Friday. Your child will begin their day in the WES pre-school classroom. Our Extended Pre-School provider will pick your child up from the pre-school room, attend lunch, then return to the Extended Pre-School classroom for fun and learning. We will follow the regular school schedule; therefore, we will be unavailable on school holidays, summer break, snow days and teacher workdays/in-service days.

Hi,  
My name's  
Lil' Hawk!



## Meals & Naps

Your child will receive a carton of milk (white or chocolate) mid-afternoon in addition to their lunch. Milk and lunch fees are not included in the Extended Pre-School Program. There will be quiet time after lunch when pre-schoolers will lay down for rest. It isn't required that they actually nap, but because their school day will be long, they will need this quiet time to relax and recharge.

## Requirements

Anyone picking a student up must sign them out so that we have a record of who picked them up any given day. You will need to provide a list of people authorized to pick your child up from school, and they should be prepared to present a photo ID, if it is someone we are not familiar with.

Please provide the following:

- ★ Paint shirt
- ★ Complete change of clothes
- ★ Sleep mat (provided by Helping Hands!)
- ★ Small pillow
- ★ Blanket and/or stuffed animal (optional)

# After-School Program

The Lil' Hawks PRIDE After-School Program will be from 3:30 to 5:30pm and provided for pre-school children thru 4th grade. Afternoon snacks will be provided by GCDC. Continued learning, play and homework will be the goal for our After-School Program. Students must be picked up by 5:30 from the north door.

## Emergency After-School Drop-In

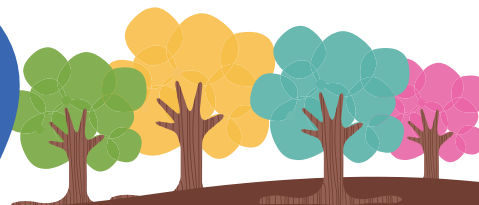
Should an emergency arise that would require a student not currently enrolled in our After-School Program to stay at the school after the 3:35 dismissal, we welcome them to join us at a \$10 per student daily fee. You must call the school (673.4365) before 3:30 to inform them your student will attend the After-School Program when dismissed by their teacher.

## Cost

- \$10/day Extended Pre-School (morning only session)
- \$10/day After-School Program (afternoon only session)
- \$20/day Extended Pre-School & After-School Program (full day w/option for lunch purchase)
- \$10/day Emergency After-School Drop-In

## Payment Process

Payment is required weekly and made payable to Wheatland School District.





In February 2013, the Grainfield Community Development Committee (GCDC) pledged to make Daycare needs a project to pursue based on the many requests from local families. Numerous hours were dedicated to investigating options, locations, funding, etc. until a discovery was made in a school in eastern Kansas. They implemented an Extended Pre-School Program within their school. So a friendship was made and information shared. When we approached the school district to consider our proposal of implementing the same program, they eagerly jumped aboard to answer the needs of the families in their school district. As in most small schools, financing new projects is a concern. GCDC committed all funding to make the Extended Pre-School Program come to life. USD 292 and GCDC are excited to offer this program and are dedicated to its success.



Grainfield Community  
Development Committee

